

# Plasma saves the day!

**A successful plasma exchange in systemic lupus erythematosus with acute complications**

Yik Chang Ho

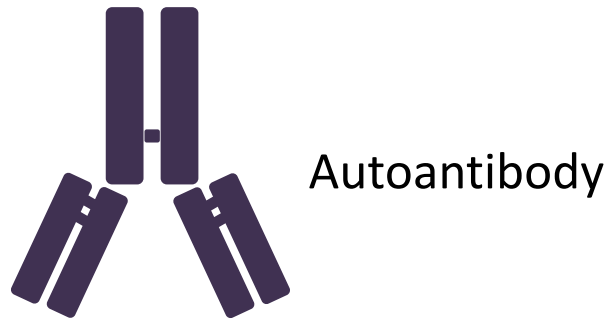
Launceston Pathology

PhD candidate in UTAS investigating Lupus



**LAUNCESTON**  
PATHOLOGY

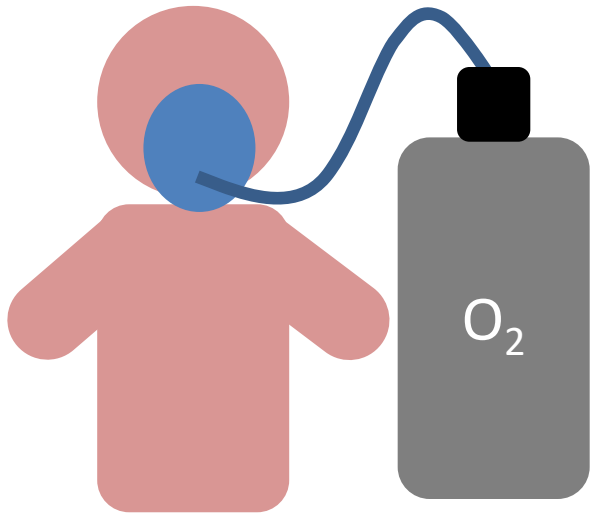
# Systemic lupus erythematosus (SLE)



- Thrombosis
- Pregnancy complications

# Patient's History

Intensive care unit (ICU)

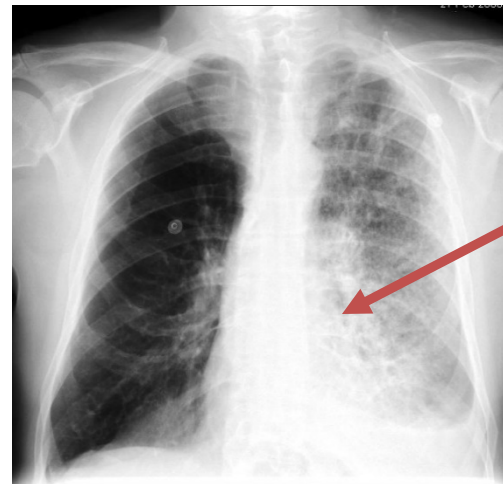


28-year-old female

Chest auscultation

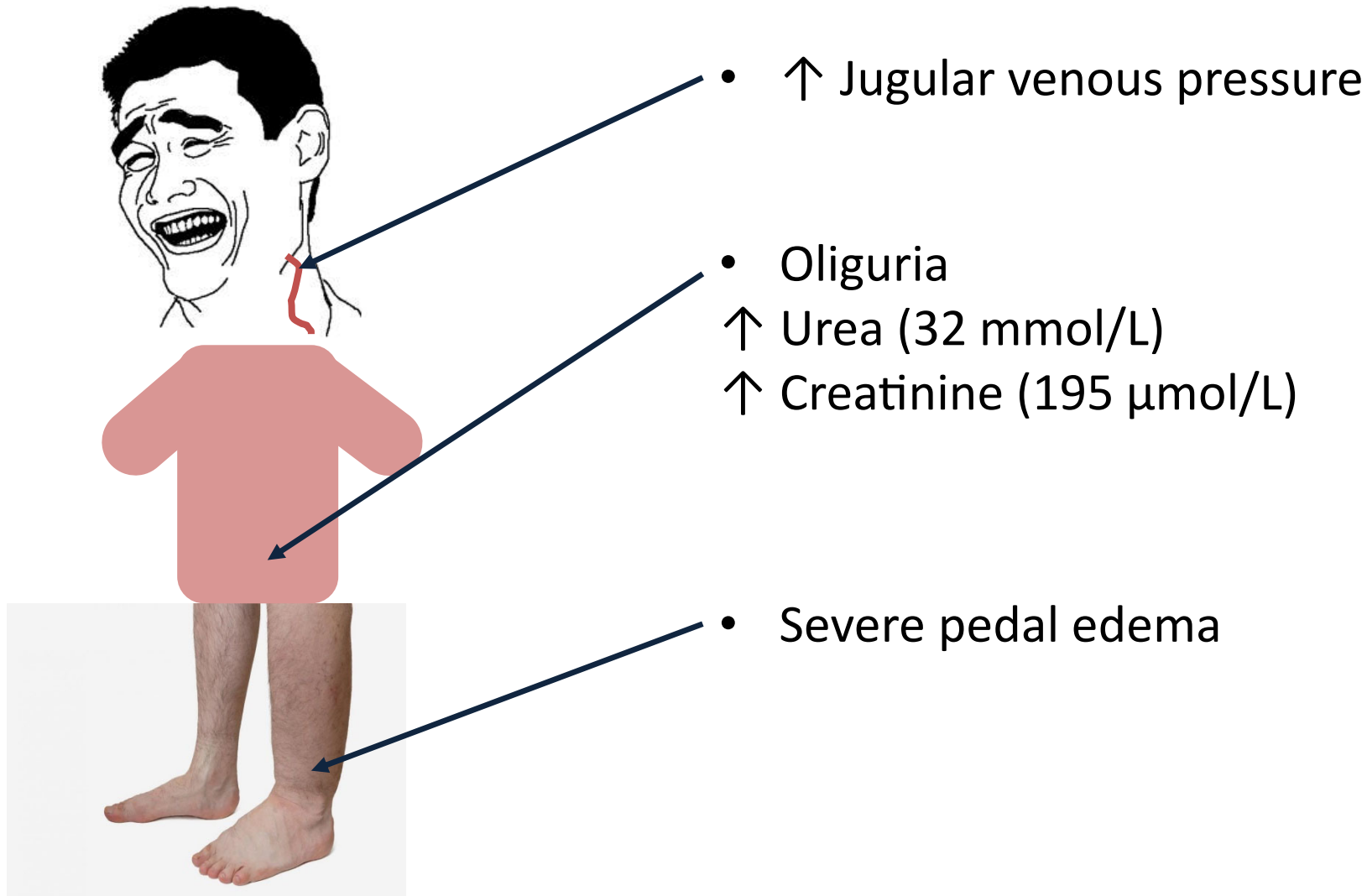


X-ray

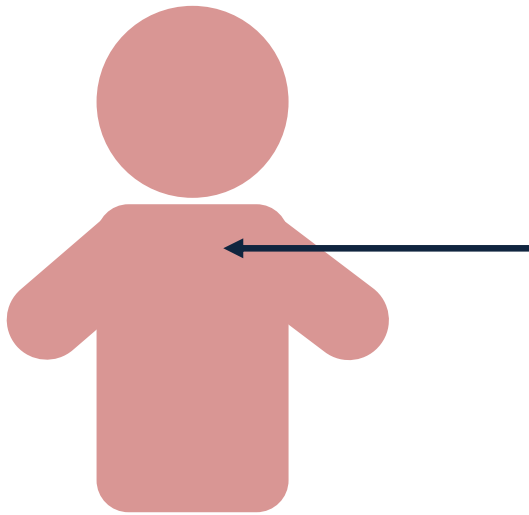


Opacification

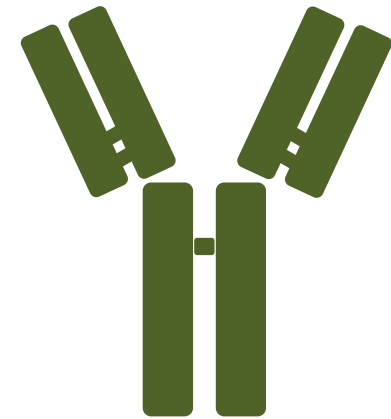
# Patient's History



# Diagnosis



Anti-nuclear antibody



Anti-DNA antibody

\*SLE with acute pulmonary and renal complications\*

# Treatment Options

## 1. Long term

- Immunosuppressive drugs

## 2. Acute complication

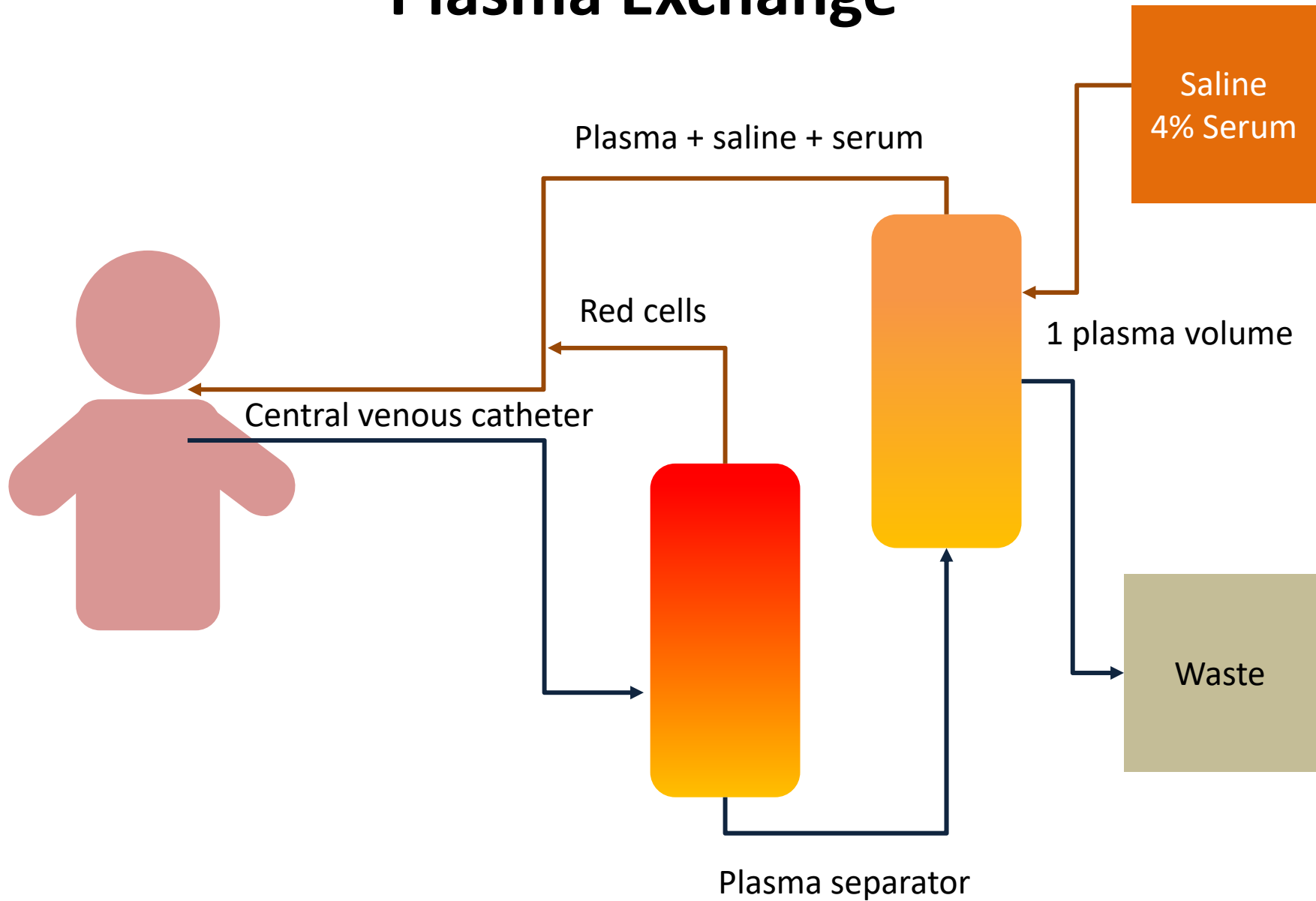
- Pulse methylprednisolone “corticosteroids”
- Irresponsive in this case

## 3. Alternative

- Plasma exchange



# Plasma Exchange



- Winters JL. ASH Education Program Book 2012;2012:7-12.

# Patients' Outcomes

1. Gradual recovery after 4 plasma exchange
2. Possible complications
  - Infection at central venous catheter
    - Alternative peripheral catheter
  - Increase autoantibody synthesis
    - Immunosuppressive drug before exchange



# Current Usage of Plasma Exchange

1. Not as first line treatment for SLE
2. Only one randomised trail
  - Not effect on renal outcome
3. Mainly case studies
  - Claimed it is effective
4. More research and studies are required

# References

- Ho YC, Ahuja KD, Körner H, Adams MJ.  $\beta$ 2GP1, anti- $\beta$ 2GP1 antibodies and platelets: key players in the antiphospholipid syndrome. *Antibodies* 2016;5:12-28.
- Hans R, Sharma RR, Marwaha N. Dramatic response to plasma exchange in systemic lupus erythematosus with acute complications: Report of two cases. *Indian journal of critical care medicine: peer-reviewed, Indian Society of Critical Care Medicine* 2013;17:385.
- Lewis EJ, Hunsicker LG, Lan S-P, Rohde RD, Lachin JM, Group\* LNCS. A controlled trial of plasmapheresis therapy in severe lupus nephritis. *N Engl J Med* 1992;326:1373-1379.
- Soyuöz A, Karadağ Ö, Karaağaç T, Kılıç L, Bilgen ŞA, Özcebe Oİ. Therapeutic plasma exchange for refractory SLE: A comparison of outcomes between different sub-phenotypes. *European journal of rheumatology* 2018;5:32.
- Winters JL. Plasma exchange: concepts, mechanisms, and an overview of the American Society for Apheresis guidelines. *ASH Education Program Book* 2012;2012:7-12.



Questions????